



F FLOATING

Installation instruction

We congratulate you for making the decision to purchase this high-quality product. This guide will help you to quickly and easily install your new CORKART floor. If necessary, you can also get more information and tips from your dealer.

General Recommendations Conditioning

> Laying Instructions

It is recommended to store the LINO FLOATING FLOORS, inside their original package, at room temperature, at least 48 hours prior to the beginning of laying work.

During installation, maintain temperature and relative humidity to level consistent to the conditions that will prevail when room is occupied. With improper acclimation, the floor could expand or contract after installation. Ideal temperature in the room where the installation will be done is 18° C (65° F) and a relative humidity between 50 to 60%.

LINO is a natural product. Its main ingredient is natural linseed oil, which is mixed with wood flour, rosin and limestone. LINO product is coloured using ecologically responsible pigments. Being a natural product there can be slight differences in colour and structure between production batches.

LINO goes through a maturing process in the first few days. This normal and temporary natural phenomenon can result in the floor appearing slightly yellow. By exposing the floor to natural or artificial light the tint will disappear, allowing the true colour of the floor to develop.

> Sub floor (Image 1 and 2)

The sub-floor must be even, perfectly dry, flat and clean. Variations should not exceed 3mm each 3 meters.

LINO Floating floor can be installed on top of hard surfaces such as ceramic tile, wood flooring or resilient floor coverings. You should not install Floating floor on top of carpets or other soft sub-floors. On cement surfaces and ceramic tiles or on sub-floors where rising damp is impossible, a 0.2 mm polyethylene sheet must be laid prior floating installation. The rolled lengths of foil should overlap about 20 cm. Turn the film upwards 5 cm along the walls and trim after the skirting boards and pro- files are fixed.

> Planning the floor installation

It is necessary to measure the room accurately, at the right angle to the direction of the floor planks. The floor planks of the last row should have a minimum width of 10 cm. If it becomes necessary, the floor planks in the first row can be cut to smaller sizes.

The LINO floating floor should not be fixed to the sub floor. There should be expansion joints of 10-15mm to walls and other fixed objects, such as pipes and door frames. It is essential that the floor can expand and contract without any obstacle.

If the dimensions of the floor areas where LINO Floating Floor is going to be placed are greater than 10 meters in length or 8 meters width; in transitions between two rooms and on asymmetrical floor areas it is necessary to use expansion joints in the floor installation.

Again, it is essential that the floor can expand and contract without any obstacle, meaning the expansion joints should not be tight, so as not to prevent the floor from moving.

The planks should be preferably be laid lengthwise in the room or in the same direction as the light falls.

Before installation the planks should be controlled. Should a plank be doubtful as to appearance or dimension the installer should not use this piece. LINO is a national product and there can be slight differences in colour and structure between production batches and not considered as defected material. Material installed in a certain area should be, if possible, from the same batch.

Glue less installation

Our LINO Floating Floor is prepared with a tongue and groove binding, what allows even amateurs to work with this type of floor. CORKART uses the patented UNICLIC®. It is a revolutionary system to install floors without using glue. It uses an ingenious form of tongue and groove to click the panels together.

Simple junction of every unit through the unglued system is a main advantage making very simple and clean to use our LINO Floating Floor

Installing the floor

Always fit the tongue into the groove. Position the panel to be installed at an angle of 20-30 degrees to the panels already installed. Move the panel up and down exerting forward pressure at the same time.

The panels will then click into place together.

Installing glue less “click” floating floor will require slightly more pressure than glued floating systems. **(Image 4)**

When the panels cannot be rotated into one another they can also be fitted lying flat. For that you will need a hammer and a special tapping block. Do not use other tapping block otherwise panels may be damaged.

Start installing the floor in one corner, preferably parallel to the longest wall and following the direction the light falls.

FIRST ROW: The first panel should be placed with the tongue side towards the wall. To ensure a perfect expansion joint, the tongues against the wall need to be sawn off. Now click the next panel lying flat and using a hammer and the special tapping block. Do this for the first row. Make sure that all panels are perfectly aligned to one another. It is extremely important for installing the next rows. The last panel of first row should be shortened accordingly. The minimum length of the panel should be 30 cm.

Never forget expansion joints of 10- 15mm to walls and other fixed objects, such as pipes and door frames.

NEXT ROWS: If the cut-off piece from the previous row is more than 30 cm you can use it. If not, use a new panel, which has to be cut in the middle.

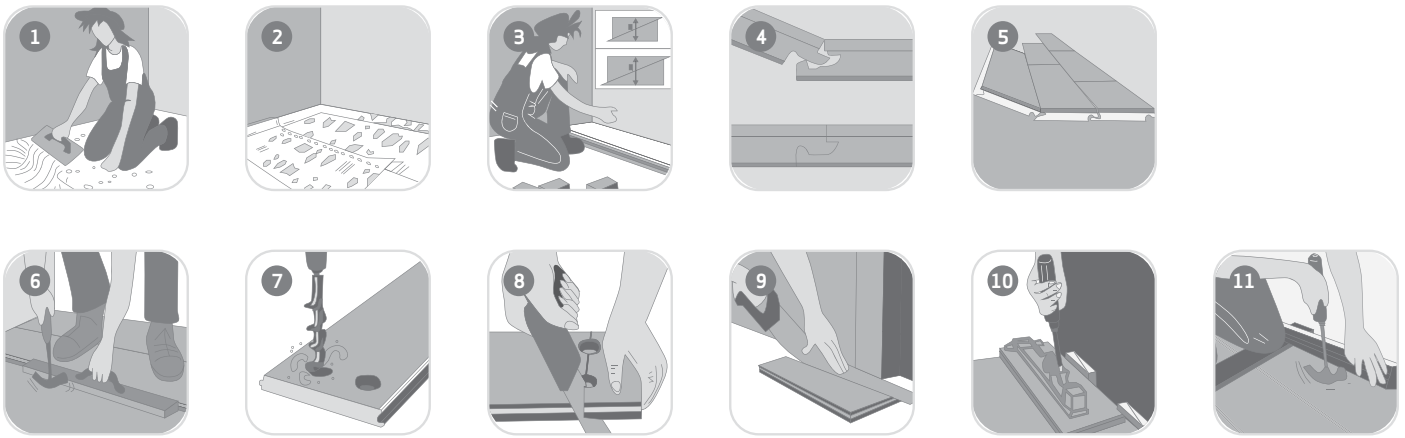
Firmly holding row 1 in place:

- Position the long side of the plank to be installed at an angle of 20-30 degrees to the panels already installed. Move the panel up and down exerting forward pressure at the same time. Use the tapping block on the long edge to help achieving the proper locking of the planks.
- Take another panel and fit it into the groove of one on the previous row leaving a space of at least 1 cm from the short side of the previous panel. Tap it until the short edges of the first two panels of the second row fit together. Install the third panel of the second row.
- Use the same technique until the first two rows are fully installed. Now push the whole unit against the wall and fill in the expansion joint (+/- 1 cm), using spacer blocks.
- Continue application, first joining the panel along its long edge, then along its short side.
- Always place weight (some panels) on the joints that you have just made in order to stabilize them.

LAST ROW: Usually the last row requires all planks be cut lengthwise. The width of the last row should have a minimum of 10 cm. Note: measure the length of the room before installation and if needed adapt the width of the first row.

Use a pull bar to click the long side. The short side can be joined using the tapping block.

Again, never forget the necessary expansion joints of 10-15mm to all the walls and other fixed objects such as pipes and door frames.



> Finish

One of the major benefits of using the UNICLIC® system is that you can immediately walk on the floor after installation. Remove all spacer blocks.

Fix the skirting boards over the extended polyethylene sheeting. Remember you need to allow the floor to expand and contract beneath the skirting board, so never fix it to the floor itself. The skirting boards should be fixed to the wall, not touching the floor.

Ideally the skirting boards must be fixed to wall leaving 100 microns (0,1mm = sheet of paper) away from the floor. Only this way the floor can expand and contract correctly.

To fill in the expansion gap around pipes and any other areas not covered by trim, use a flexible caulk.

> Under floor heating

Before installing LINO Floating floors over a subfloor with underfloor heating, you must install a moisture barrier that is at least 0,2mm thick.

If any type of under floor heating system has been implemented, in the sub-floor, there are certain rules to be taken in consideration:

Please note that the surface temperature of the flooring must not exceed 27° C (80° F).

Note that gaps may occur during the months of heating. Minor gapping (up to 0.2mm or 0.01 inches), without the unlocking of the pieces, is not considered a defect. A relative humidity between 50 to 60% is considered the ideal room condition. Please avoid dry air by installing humidifiers and putting in houseplants.

> Moisturize

LINO Floating floors are not recommended for damp or steady rooms such as: bathrooms, shower rooms, saunas or other rooms exposed to excessive moisturize.

> Preventive and maintenance tips

To maintain your floor in excellent conditions you can follow certain procedures:

- Avoid excessive humidity on the floor
- Wet maintenance is forbidden
- Do not allow water to stay on the joints for long periods
- Use protective feet on chairs and tables to reduce scratching's
- Castor wheels should be of soft material suitable for resilient floor coverings
- Regular cleaning is more beneficial and cost effective than occasional deep cleaning.
- Use recommended cleaning products
- The improper use of high pH maintenance products may damage resilient flooring.
- Abrasive powders or cleansers should not be used
- Do not use highly alkaline products (ammonia, soda) or strong solvents such as acetone as they can be harmful to both people and to your floor. Most of the stains can be safely removed using a dry (paper) towel, water, detergent, white spirit or alcohol (in that order).
- Light and uni-colours may need to be cleaned more frequently
- LINO Floating floors does not require the use of polish

> Sunlight exposure

LINO may change colour when exposed to sunlight. When the exposure to sunlight happens, LINO tends to fade. To prevent LINO colour to fade use curtains or other systems of sun screening to minimize the effect of sun exposure.

> Cleaning

Remove dust and loose dirt by vacuum cleaning, sweeping or mopping

Remove spots, stains and spillages with a damp mop and a neutral floor cleaner

> Maintenance

Remove dust and loose dirt by vacuum cleaning, sweeping or mopping.

Remove spots, stains and spillages with a damp mop and a neutral floor cleaner.

Spray buff the floor with a rotary machine (300-500 rpm) and a 3M red pad or equivalent using a buffable floor maintainer to remove gloss irregularities and provide an even appearance.

> Tools and accessories

- Moisture polyethylene barrier of 0.2 mm (if needed)
- Adhesive tape
- Spacer blocks
- Hammer
- Tapping block
- Pull bar
- Measuring tape
- Saw
- Dust mask
- Safety glasses
- Pencil

Recommended Products

Primary Care

FORBO CLEANER

FORBO MONEL

For spray buffing use a pH neutral floor maintainer

These products should be used in accordance with the directions printed on the manufacturers label.

Other floor care products may be used on Corkart Lino Floating Floors. If alternative products are to be used consult with your regular supplier for more information, guidance and warranty

IMPORTANT NOTE

There may be color variations between the sample and the material produced.