



SOLID BOARD CLIC

Installation instructions - Valinge 5Gi

We congratulate you for making the decision to purchase this high-quality product. This guide will help you to quickly and easily install your new CORKART floor. If necessary, you can also get more information and tips from your dealer.

General Recommendations

Conditioning

Laying Instructions

Before starting the installation of the **CORKART** floor, the packages should be stored closed, horizontally and in small piles (lying down) in the room where the floor should be placed later, for at least 48 hours. It is important to acclimate the goods to the physical conditions.

During installation, the temperature should be at least 18° C and should not exceed 23° C, with about 40-70% relative humidity. For a balanced installation, the boards should be mixed prior to placement (open 3-4 packages). **CORKART** is a floating floor and can be installed below grade, on grade or above grade.

CORKART flooring can be installed in private residences, public buildings, restaurants, commercial spaces, offices, as well as in wet rooms, etc. (Installation in medical offices should be clarified with the responsible health department).

CORKART flooring is an imitation of real wood or natural stone. The boards are deliberately structured and different. Differences in color and structure, even within a package, are therefore not grounds for complaints, but should emphasize the authenticity of appearance.

Sub-floor / Surface

- The sub-base must be clean, free of cracks, stable, uniform and dry.
- The leveling of the substrate must meet the requirements of DIN18202 (eg 1 m long <2 mm ga
- The permissible damping of the table according to the CM method must be observed:
- for concrete screed <2.0% CM (with radiant hot water heating <1.8%)
- The PE sheet is recommended specially when installed directly on concrete floor.
For health and hygiene reasons the PE sheet is also recommended as a barrier to prevent contact with mold and other existent substances on the sub-floors.
Corkart will not be responsible for the degradation of the product in the case of non-use of the PE sheet
- When using a vapor barrier, as recommended, the PE sheet should have at least 0,2 mm thick under the **CORKART** floor. The edges should be overlapped about 20 cm and glued. On the walls, the film should be about 3 cm high.

The **CORKART** floor can be installed on ceramic, tile, linoleum, PVC tiles... Soft floors (such as carpet) must be removed before installation.

Planning the floor installation

To ensure you enjoy your **CORKART** flooring for a long time, please read carefully:

- Confirm the quality and perfect condition of the goods delivered;
- Ensure an ideal working light during installation. An evening installation is not recommended;
- Boards that show defects prior to installation should not be used.

If you find defected planks, you should stop work immediately and inform your dealer (duty to inspect and care). Goods already placed or cut are excluded from claims for damages and exchanges.

A joint of at least 10 mm is required between the **CORKART** floor and the wall, as well as all fixed components, such as heating pipes, door frames, etc. Adjacent areas, with very different temperatures, must be separated by an expansion joint.

In bright sunlight, color changes may occur. To minimize this, sun protection should be provided for windows and greenhouses from floor to ceiling
Glue less installation

Uses the patented Valinge 5Gi®. It is a revolutionary system to install floors without using glue.

Installing the floor

CORKART uses Valinge 5Gi® glue-free fitting profile which allows anyone to install the floor.

The flooring should be installed from several cartons at the same time to insure proper color, grain, and shade mix. Before starting, first measure the width of the room, and then divide the room's width by the width of the plank. If this means that the last row of planks will be narrower than 50mm, then you will need to cut the first row of planks to make it narrower.

Cut in such a way that both rows of planks (the first and last to be installed in the room) will have the same approximate width for an overall continuous look. See installing the last row.

The planks install easily without glue. Simply attach the tongue on one plank to the groove side on another plank and the planks will lock snugly together.

A joint of at least 10 mm is required between the **CORKART** floor and the wall, as well as all fixed components, such as heating pipes, door frames, etc. Adjacent areas, with very different temperatures, must be separated by an expansion joint.

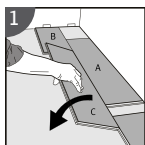
We recommend that you stick on the transitions with a tape. Begin the installation of the planks in the left-hand corner of the room with the long direction parallel to the incoming sunlight source or to the longest wall of the room (if this is possible). Be sure to install the first row of boards with the tongue side facing the wall.

If an underlayment is not pre-attached to your purchased floor Corkart advise the use of underlay for extra comfort, which must be of high density to avoid damaging of material.

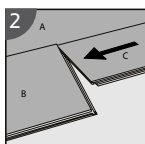
We recommend that you stick on the transitions with a tape. Begin the installation of the planks in the left-hand corner of the room with the long direction parallel to the incoming sunlight source or to the longest wall of the room (if this is possible). Be sure to install the first row of boards with the tongue side facing the wall.

If an underlayment is not pre-attached to your purchased floor Corkart advise the use of underlay for extra comfort, which must be of high density to avoid damaging of material.

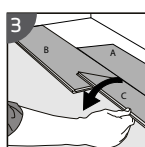
GENERAL INSTALLATION INSTRUCTIONS



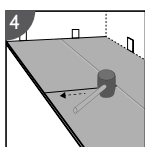
1 First row
Place panel (A) as support for long side alignment of panel (B) and (C) while you install panel (B) and panel (C). After that the complete first row is installed, remove panel (A).



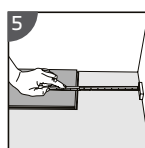
2 Second panel, first row
Place this panel (C) gently close to the short end of the first one (B).



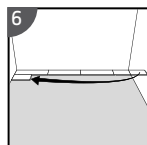
3 Fold the panel down in a single movement. During the fold down, make sure the panels are close to each other.



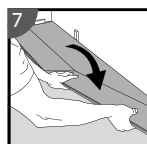
4 Afterwards use a rubber hammer along the short end just installed.



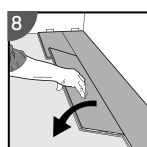
5 At the end of the first row, put a spacer to the wall and measure the length of the last panel to fit.



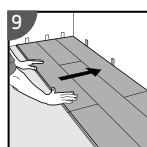
6 Second row
First panel min length 400 mm. Put a spacer against the left wall.



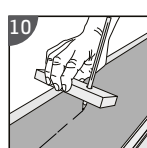
7 Staggered joint distance i.e. minimum distance between short ends of planks in parallel rows shall not be less than the given length.



8 Second plank second row
Place the panel gently and close to the short end of the previous panel and fold it down in a single action movement.

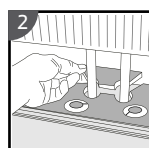
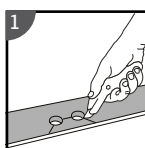


9 After 2-3 rows
Adjust the distance to the front wall by placing spacers.



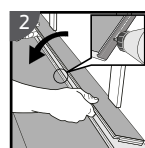
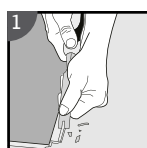
10 Last row (and perhaps also first row).
Minimum width 50 mm. Place a spacer to the wall before measuring. Make a simple drawing tool (piece of wood with a hole) and mark the panel along the wall. Cut the panels lengthwise.

INSTALLATION AROUND RADIATOR/HEATING PIPES



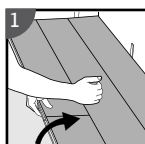
1 Drill holes two times larger than the diameter of the pipes. Remove a piece of the panel with a utility knife. Put the panel on one side of the pipes and the removed piece on the other side.

WHEN ANGLING IS NOT POSSIBLE



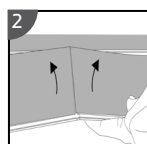
1 Remove the vertical locking part of the strip with a chisel, put applicable glue on the strip and push the panels horizontally together. Place some spacers between last board and the wall.

DISMANTLING PANELS



1 Separate the whole row by carefully lifting up and release the whole row.

Fold up the row and release the whole long side.



2 Disassemble the panels by lifting the short ends upwards.

Never fold up a panel, as this damage the profile.

NOTE

Our written technical advice is based on tests but is only a non-binding indication and does not exempt you from the testing of the products provided by us for its suitability to the intended procedures and purposes. The installation use and processing of the products are beyond our control and, therefore, are your sole responsibility.

Underfloor heating

The surface temperature must not exceed 28 °C (with water underfloor heating).

Use with electric floor heating is not advised unless it is incorporated into a 15mm screed or levelling layer or has an on/off switch instead of a continuous system in this case always ensure the leveling of the pavement before installation.

Size of Installation (Limit)

The ambient temperature during the installation should be about 18-23 °C, with about 40-70% relative humidity. If the temperature variation between installation and use don't exceed 10° C, installation in areas up to 20x20m (400m²) are allowed. In case of 15° C variation the area recommended is 15x15m (225m²).

Preventive and maintenance tips

Especially in winter, you should check humidity levels. In order to maintain a constant humidity, water heaters are needed in the radiators and humidifiers are required for large rooms. In areas with a humidity level, the environment must be well ventilated.

Use doormats outside each entrance to your home to prevent dirt, sand, grit and other substances from being tracked onto your floor.

Use non-staining mats on your floor. Do not put rubber-backed, latex-backed or coco fiber mats on your floor because they will stain or damage the surface.

Support furniture with wide-bearing, non-staining floor protectors. Ideally, the protectors should be at least one inch in diameter, made of non-pigmented hard plastic, and rest flat on the floor. Non-staining felt protectors are also acceptable. Casters (type W), felt pads or floor protectors are recommended for all moveable furniture.

Use protection mats under chairs with caster in order to avoid abrasion of the vinyl flooring. Make sure that any metal protectors are rust-proof.

If you need to move heavy furniture and/or appliances across the floor, always use strips of wood, plywood, or hardboard runways to protect the floor.

Always use runways even if you have an appliance dolly, or even if the heavy objects are equipped with wheels or rollers.

Sunlight exposure

Protect the finished SPC installation from exposure to direct sunlight. Close your curtains or blinds where extreme sunlight hits the floor. A combination of heat and sunlight causes most fading or discolorations.

Close your curtains or blinds where extreme sunlight hits the floor. A combination of heat and sunlight causes most fading or discolorations.

Cleaning

Proper care and cleaning are an important part of maintenance.

Cleaning should be done with a damp mop, using neutral products. Do not use aggressive agents and / or solvents or contain glycerin.

Sweep your flooring regularly with a damp cloth and only with water at least once a week. Prevent stains by wiping up spills promptly.

Maintenance

Please note that in commercial areas, depending on the application, a PU finish should be given. In medical offices, salons and auto dealers we recommend Dr. Schutz PU Anticolor .. Restaurants, offices, shops, etc. recommend Dr. Schultz PU Sealer.

If you want to apply an extra protective layer as a preventive measure (to help your floor last longer), we advise that you use products from Dr. Schutz.

The Dr. Schutz PU Anticolor and Dr. Schultz PU Sealer products are for professional use only. Both products meet the requirements of BGR 181, DN 51130, Rutile R9

The manufacturer's instructions must be observed. The use of these products is the responsibility of the user.

Repair Guide

SPC is tough and durable; however, if a plank becomes damaged, it can be replaced.

If the damaged plank is along the perimeter of the room, the easiest technique is to disconnect the planks until the damaged plank is removed. Replace the plank and reassemble the planks. If it is impractical to disconnect and reassemble the flooring, the following procedure should be followed:

- Using a straight edge and a sharp utility knife, cut out and remove the center of the damaged plank, leaving approximately a 250mm strip attached to the surrounding planks on all sides.
- Carefully cut back from the corners of the plank to the inside edge.
- Remove the plank edges by wiggling the cut plank out from the tongue and groove of the surrounding planks.
- Prepare the replacement plank by placing the plank face down and folding back and removing the groove strip on both the long and end profile. Using the decorative surface of the tongue end as a guide cut away this overhanging profile using a sharp utility knife.
- Place some double-sided carpet tape onto the subfloor covering sufficient area of the removed plank.
- Position the replacement plank by engaging the tongue of the long side into the groove of the adjoining plank. "Hinge" the prepared replacement plank into position.
- Use a hand roller to assist in aligning the plank edges into position

Tools and accessories

- Tape Measure
- Moisture Meter (wood / concrete)
- Circular or Hand Saw
- Pull Bar
- Safety Equipment (Goggles & Mask)
- Utility Knife
- 1/4" Spacers
- Broom

IMPORTANT NOTE

There may be color variations between the sample and the material produced.